



# Ridge Wharf Yacht Centre

(Proprietors: Ridge Yachting Centre Ltd.) Reg. in England No. 867372

Ridge, Wareham, Dorset BH20 5BG

Tel: Wareham (01929) 552650

Fax: (01929) 554434

e mail: [office@ridgewharf.co.uk](mailto:office@ridgewharf.co.uk)

[www.ridgewharf.co.uk](http://www.ridgewharf.co.uk)

## WASTE MANAGEMENT PLAN - Berth holders guide

### WASTE DISPOSAL INSTRUCTIONS

In order to reduce marine pollution in accordance with the 2003 No. 1809 Merchant Shipping and fishing vessels (Port Waste Reception Facilities) regulations, all waste is to be disposed of in the correct bins provided on site before departing for sea. Alternatively retain all waste within adequate storage capacity onboard until able to dispose of appropriately on return, or arrival at the next port of call.

### LOCATION OF WASTE FACILITIES

Waste disposal containers - skips for general waste, a dedicated skip for engine filters, oil tank for waste oil, dedicated box for paint cans and a waste battery box, are located in the fenced garbage compound adjacent to the washroom building.

### WASTES TAKEN

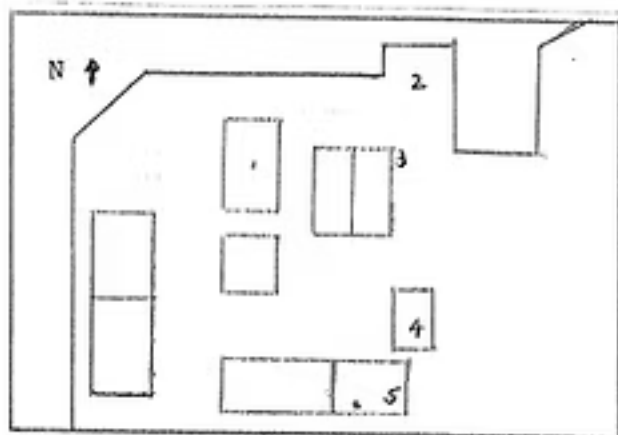
Only general waste, dirty/watery oil, engine filters, empty paint cans and waste batteries can be routinely accepted. Please contact the office for disposal of non EU food waste, toxic or other specialist waste, prior to your return or arrival at Ridge Wharf. Do not place these wastes in the general waste bins.

### CHARGES

The waste facilities are only provided for berth holders and visiting yachtsmen. Charges for annual berth holders and visiting yachtsmen for use of the facilities are incorporated within the berthing fee. Visiting Winter berth holders are charged a single fee of £20.00 plus VAT/Winter season. Specialist waste disposal can be arranged by advance consultation with the marina office and will be charged at cost plus an administration fee of £50 plus VAT.

### CONTACT POINT

For any issue arising from waste disposal, please contact the yard office.



1. Office and chandlery
2. Fuel Jetty
3. Gas Cage
4. Garbage and waste compound
5. Shower / toilet block

Feb 2024